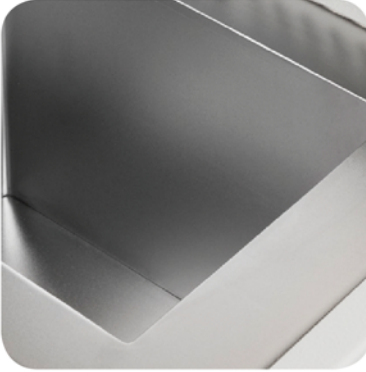
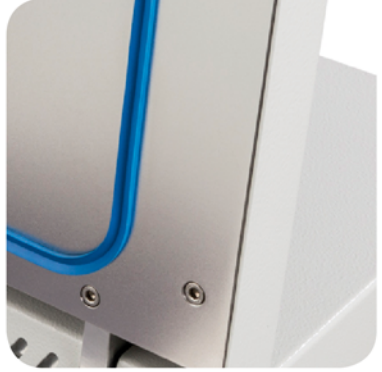


HISTOLOGY EQUIPMENT



VACUUM TISSUE
PROCESSOR
TP-300
FTP-300



INTELSINT

TP 300

Simply efficient



Fully enclosed, "state of the art" featured, safe and highly reliable, the Intelsint TP-300 is the right answer for the day-by-day tissue processing needs of every Histology laboratory.

With a processing capacity of 300 specimens, five paraffin containers and an easy to operate HMI (Human Machine Interface) it sets itself at the top of the category.

Designed with in mind concepts of specimens safety and operator ergonomics, the TP-300 is capable to perform also in not favorable environments.

Its fully automated RFD (Remote Fill and Drain) device allows the user a safe, clean and easy reagents renewal.

The TP 300 Sample Processing Chamber

- Completely made in high quality Stainless Steel.
- Safe and easy to operate lid lock mechanism.
- Special, easy to clean surface treatment.
- Gas piston to keep the lid open.
- Lid open/close sensor.



FTP 300



Simple, fast, reliable

Fully enclosed, "state of the art" featured, safe and highly reliable, the Intelsint FTP-300 is the safest and more cost effective answer for the needs of every Histology laboratory.

The FTP-300 is the fastest non-microwave tissue processor today available. Up to 300 biopsies can be safely processed in about 40 minutes. This result can be achieved with traditional reagents or with most of the Xylene and Ethyl alcohol substitutes today available on the market.

The reagents heating is safely performed during their filling into the sample processing chamber without any delay by a patented device called EHE (Enhanced Heat Exchanger). Only three reagents (plus fixation) are necessary to successfully and rapidly process biopsies. Every sample is evenly warmed at the desired temperature since the very beginning of each processing step. Any risk of overheating is avoided thanks to the special conformation and the multiple safety devices of the EHE.

With a processing capacity of 300 specimens, five paraffin containers and an easy to operate HMI (human machine interface) it sets itself at the top of the category.

Designed with in mind concepts of specimens safety and operator ergonomics, the FTP-300 is capable to perform also in not favorable environments.

Its fully automated RFD (remote fill and drain) device allows the user a safe, clean and easy reagents renewal.



User friendly graphics and intuitive HMI (Human Machine Interface)

Charcoal filters easy substitution and safe handling

2,5 liters reagents tanks pre-filled



Sample processing chamber

Entirely made of high quality Stainless Steel
 Safe and easy to operate lid lock mechanism
 Special easy to clean surface treatment
 Gas piston to keep the lid open
 Lid open/close sensor

Xylene free all Intelsint tissue processors can efficiently work with xylene substitutes



Factory pre-filled reagents and wax bottle

(Ask your local dealer for availability in your country)

- ✔ **HMI software user friendly, simple and clear**
- ✔ **Available software languages: Chinese, English, German, Italian, Spanish, French, Polish, Czech, Portuguese.**
- ✔ **Reagent Management System: for reagents, waxes, filters**
- ✔ **Wax Cleaning Cycle: efficient on site system**
- ✔ **Reagent Agitation: user selectable**
- ✔ **Remote Fill/Drain automatic for reagents and purge agents**
- ✔ **Data backup on USB port**
- ✔ **User interface: LCD 15" color monitor with Touch Screen**
- ✔ **Process Programs: 18**
- ✔ **Delay: up to 15 days**
- ✔ **Reverse processing special program**
- ✔ **Process End Time Management: for every program, with auto-store**
- ✔ **Purge programs: 1 factory optimized, 3 custom**
- ✔ **Charcoal filters: 2, easy substitution and safe handling**
- ✔ **Anti-blackout and power failure device**
- ✔ **Remote alarm socket**
- ✔ **Sample Processing Chamber fume aspiration**
- ✔ **Easy maintenance and service**
- ✔ **Xylene free**
- ✔ **EHE for no-delay reagents heating up to 65 °C (only on FTP-300)**



Process Editing

The most used processing programs and service routines are shown in the Main Menu.

The most important operational parameters are always shown for "at a glance" instrument check.

Service routines like the Reagent Management System and the Wax Purification Cycle assist the user on keeping the reagents at the best possible level of cleaning and quality.

The Service routines assist users and service technicians for an easy and efficient instrument check, setup and maintenance.

Process Start and Run

Every processing parameter is shown during the entire process. During the process information like: program name, end time, step under execution, remaining time, bottle filled into the SPC, are shown or highlighted.

Processes can be suspended or aborted in any moment. In case of power failure, when the power is back, the unit restarts the process from where it was interrupted.

With the optional UPS the units continues to work for 60 minutes, then it shuts down automatically with the samples safely recovered.



Remote Fill & Drain

This unique and useful function permits to empty and refill one of the reagent bottles without removing it from its slot.

The function is completely automated, so it allows the user to walk away during the execution.

Graphic Process Monitoring

With the graphic example below it is possible to see the temperature course of the SPC (Sample Processing Chamber) for each step of a fast FTP-300 process.

The picture is taken from an FTP-300 graph report at the end of a fast process of biopsies.



TP 300 - FTP 300 - Technical Specification

Rating	115/230V - 50/60 Hz
Max Power	1000W TP 300 - 1500W FTP 300
Weight	180 Kg (empty)
Dimension (H/W/D) mm	1300, 720, 600
Running ambient temperature	+10° / +35° C
IEC1010 classification	Protective Class 1
Max elevation	2500 mls
Temperatures control precision	+/- 1°C
Paraffin waxes	4+1 reserve-volume 2,5 l
Wax Melting Time	8 Hours
Wax working temperature range	+55°C / +65°C
Sample processing chamber capacity	300 Std cassettes
Reagents working temperature range	ambient / 60 °C
Sample processing Chamber	INOX
Sample baskets	2x150 cassettes each with carrier
Reagents tanks	10 volume 2,5 l with quick connectors
Purge agents tanks	2 volume 2,5 l with quick connectors
Approvals	CE/IVD/UL



Optionals

Printers: Any Windows compatible printer

UPS: 60' uninterruptable power source

Large specimens basket

GSM Remote Alarm and instrument check



INTELSINT Srl

Via Rivoli 122 - 10090 Villarbase (Turin) - Italy

Phone: +39 011 9528015

Email: info@intelsint.com

www.intelsint.it - www.intelsint.com

Agent / Dealer:

